

THE REFUGE

2019 CAPITAL CAMPAIGN



Psalm 9:9

**The Lord is a Refuge for the oppressed,
a stronghold in times of trouble**

LETTER FROM THE DIRECTOR



For the last 12 years, The Refuge has been part of the community in Johnson County. When it was founded, Thom Hord had a vision to pull the whole community together to make a difference. Over the last 12 years, we have changed locations but never changed the mission of what we believe in. Every time a client comes to The Refuge, a volunteer meets with them to show compassion and concern through prayer and a listening ear. This is one of the things that our clients tell us repeatedly that they appreciate. We want to serve each person with dignity, respect and compassion – just like Christ did. We want to serve and love well.

We have adjusted our ministries over the years as well. But we will serve our community through our pantry, so that we are able to meet a physical need. We want to grow the afterschool program, so that we are able to mentor students and families that have no other option. We can make a difference in the life of our youth – so that they grow academically, but also spiritually.

We have faced many pivotal times over the last 12 years. However, our board and staff feel this may very well be one of the biggest opportunities that God has provided for us. You have made the last 12 years possible, and we feel strongly that with God's help, we can do more. Our goal is to be the best stewards of what we've been entrusted with. How great would it be to own the property, debt free, so that we can do more with each dollar that is given?

I am so blessed to partner with you, the staff, the board, and the volunteers to see how WE can make an impact. My prayer is that we bring God glory, that you are blessed through your giving, and that more and more people come to know God through The Refuge.

Staff:

Kerry Carmichael Executive Director

Marcie Farley Office Coordinator

Stacie Ruff Pantry Coordinator

Board of Directors:

Mark Slauter Board Director

Dennis Reimold Board Vice-Chair

Jim Wainwright Board Treasurer/Secretary

Tony Marlin Board Member

Tammy Richert Board Member

Ralph Shiley Board Member

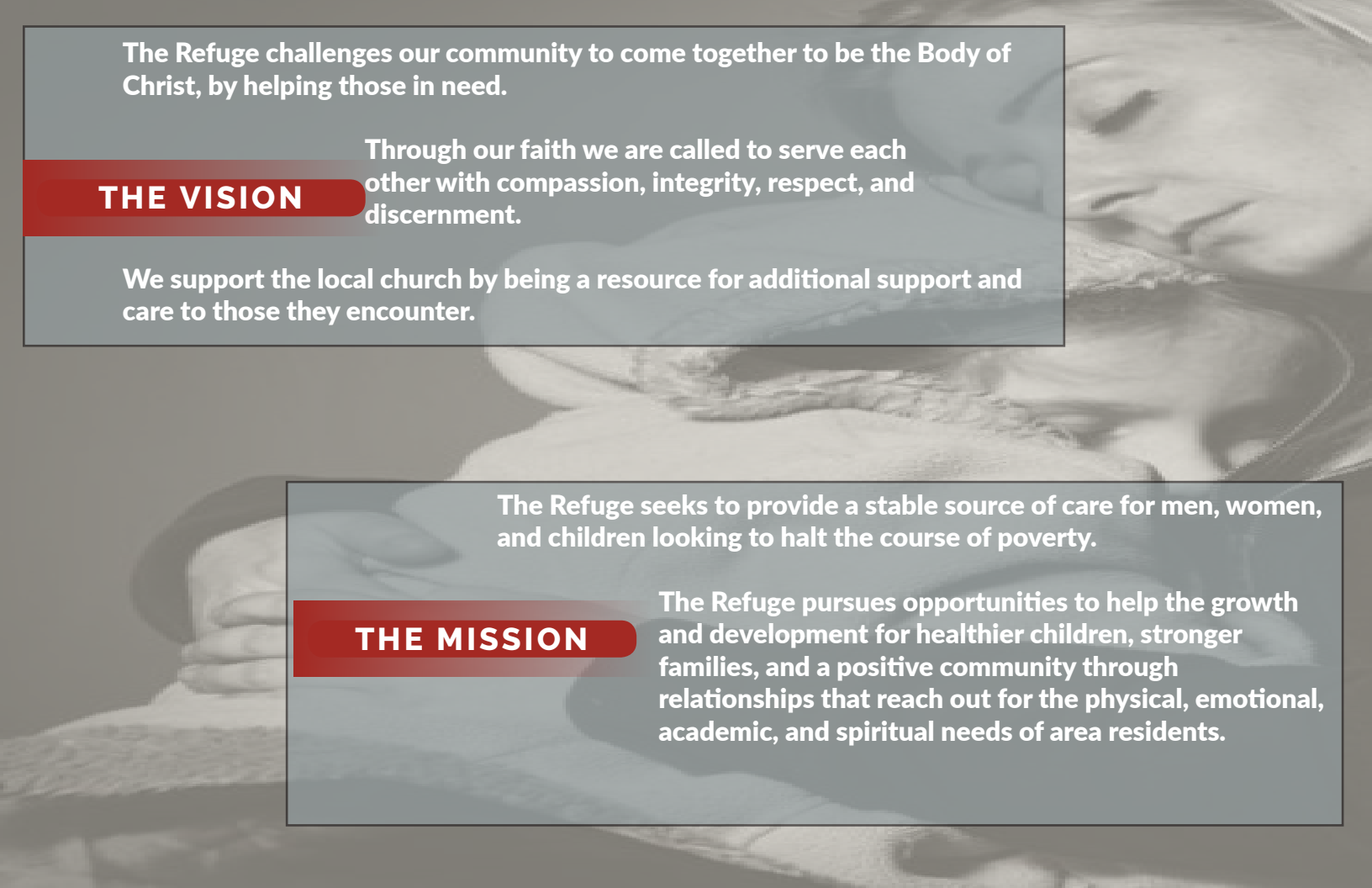
Mike McQueen Board Member

Ryan Steinert Board Member

Nancy Lalenko Board Member

MEET OUR TEAM





The Refuge challenges our community to come together to be the Body of Christ, by helping those in need.

THE VISION

Through our faith we are called to serve each other with compassion, integrity, respect, and discernment.

We support the local church by being a resource for additional support and care to those they encounter.

The Refuge seeks to provide a stable source of care for men, women, and children looking to halt the course of poverty.

THE MISSION

The Refuge pursues opportunities to help the growth and development for healthier children, stronger families, and a positive community through relationships that reach out for the physical, emotional, academic, and spiritual needs of area residents.

In November the building we leased at 65 Airport Parkway was sold. The new owner notified us that they were not going to renew our lease which was ending December 31, 2018.

THE STATUS

While the board had looked at several properties, we were not expecting to have to move so soon. However, God provided a facility that we can rent for a year, giving us the opportunity to remain open and serve the community, while we raise funds to purchase a property.

The Refuge is a faith based organization that encourages individuals, families, churches, and businesses to collaborate and leverage their unique talents, skills, treasures, resources, and time to help those in our community. As we partner together we are able to do more.

THE STRATEGY

Since our founding in 2007, The Refuge has paid rent at all of our locations, adding to our expenses and limiting the services we can provide. As God opens doors for The Refuge to purchase a facility, we will have more opportunities to serve families and meet specific needs.

THE IMPACT

Since 2007.....



89,000 individuals served since 2010



1,200 kids sponsored or helped during Christmastime



\$1,210,450 groceries and hygiene items provided



2,316 boxes of Thanksgiving meals served to families



1,136 benevolent referrals in the last five years

THE GOAL

Total Need: \$1,000,000

Phase One: by July 1st, 2019

\$425,000

To purchase property at 1150 South Park Drive

Phase Two

\$400,000

To build out the property

Phase Three

\$100,000

For commercial kitchen

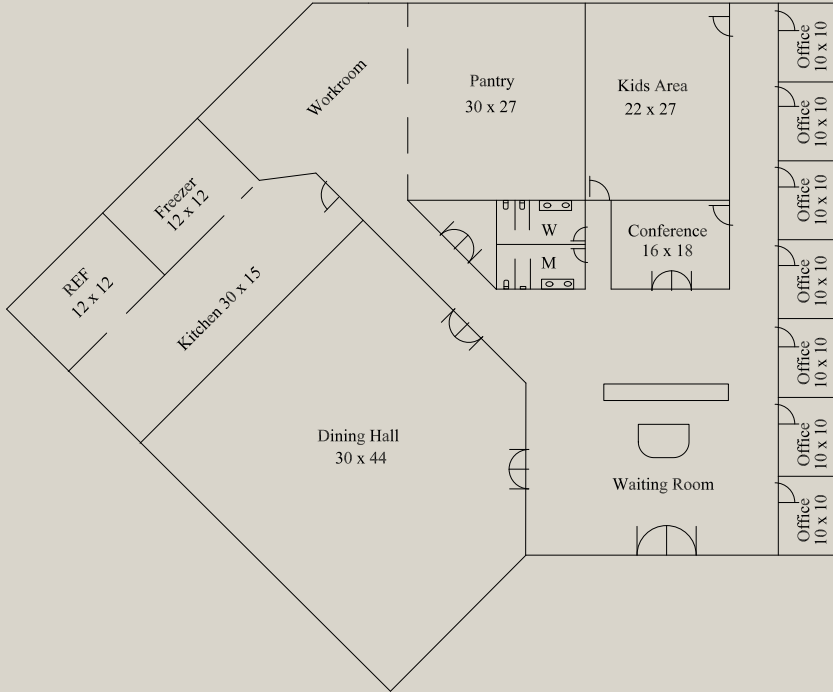
Phase Four

\$75,000

For furnishing and property items needed

Phase 2, 3, and 4 will be obtained through one-time gifts, multi-year pledges, or in-kind donations

SPONSORSHIP LEVELS



\$425,000: Building Name Rights (1)

\$100,000: Kitchen Naming Rights (1)

\$50,000: Pantry Naming Rights (1)

\$50,000: The Drop Naming Rights (1)

\$25,000: Playground Naming Rights (1)

**\$10,000: Lobby/Entrance Naming
Rights (1)**

SPONSORSHIP LEVELS

**\$10,000: Dining Room Naming Rights
(1)**

**\$5,000: Phone/Mechanical Naming
Rights (1)**

**\$5,000: Coaching Room Naming
Rights (4)**

**\$5,000: Staff Offices Naming Rights
(3)**

**\$5,000: Storage Room Naming Rights
(3)**

\$2,500: Bathroom Naming Rights (2)

**\$2,500: Kids Play Area in Waiting
Room Naming Rights (1)**

\$1,000: 100 Entry Way Tiles

\$500: 200 Donor Recognition Wall

**\$70,000: Donations received that are
less**

OUR VOLUNTEERS LOVE TO



“I volunteer at the Refuge on a weekly basis in the office because I feel like as a Christian I need to be a useful part of the body of Christ. By using my skills to serve, I am meeting the needs of my community in a very practical way and helping support a ministry that shares Christ with people I may not get a chance to otherwise. Also, I recently started volunteering one more time a month so that I could help in the evening; as well as the daytime. They had a need and I could help.” -Aubrey Faulkenberger, 7+ year volunteer

“I serve at The Refuge because I love being able to serve and help by giving of my time. It’s truly a gift God has given me to serve.”
-Tony Banks, 1 year volunteer

“Volunteering at The Refuge is gratifying with a group of like minded, caring Christians who enjoy helping people in need. My personal contribution of coaching and praying with our clients contributes back to me spiritually and personally.” -Kevin Ficara, coach during pantry days for 6 years

SERVE AT THE REFUGE!

“I started at the Madison Avenue site. Mary Gardener was kind enough to train me. I love serving! God has equipped me with that passion for this ministry to feed His sheep. That to me means feeding them physically and loving them. The Refuge is the perfect place for me to carry out God’s call on my life.” -Brenda Davis, 6 year volunteer

“I volunteer to serve, bless, and encourage our clients. It is a privilege to work with such a dedicated and efficient group of volunteers and staff who prioritize the physical and spiritual needs of the clients.” -Twyla Bowers, 10+ year volunteer

“It is a privilege working with the refuge, a ministry that has a genuine desire to help the people in our community with their material and spiritual needs.” -Mike McQueen, 9+ year volunteer

HEAR MORE FROM OUR STAFF



STACIE RUFF PANTRY COORDINATOR

“Being a nurse by trade, I have always had the drive to care for people. This job has given me the opportunity to care not only for a person’s physical needs, but also their mental, social, and spiritual needs. I also love serving Christ in a way that I see daily his continuous presence and work in clients, volunteers, but mostly my heart.”

MARCIE FARLEY OFFICE COORDINATOR

“Each of us are equipped to serve His Kingdom. Serving at The Refuge gives me an opportunity to be the hands and feet of Christ by meeting people’s needs.”

HOW LINDA AND HER FAMILY FOUND HOPE THROUGH THE REFUGE



Linda C. came to us during the summer of 2018. She and her two children had suddenly found themselves living in their car due to the loss of her job that provided housing. We, The Refuge, paid for a

week's stay at a hotel, which is not normally something we do but due to the dangerously high heat indexes at that time we did. Linda had recently lost one of her daughters to suicide and really felt at the end of her rope. During this stay, Linda was able to secure a job at the

hotel as a laundress & had a room provided to her and her kids. She has since, moved into an office position at the hotel. She continues to visit the pantry monthly as she is doing her best to get 'caught up' with bills and pay off debt. Each month, she and her kids are smiling and looking healthy. She credits The Refuge with providing positive relationships, lending support, and fulfilling her physical needs so she could focus more on her mental and spiritual well-being. She feels she always has a place she can go when she needs a kind person to spend time with and pray for her.

The Refuge

PROVIDING FAITH, HOPE AND LOVE

The Refuge, Inc.
1111 Southpark Drive
Greenwood, IN 46143
www.therefugeinc.com
info@therefugeinc.com
317-889-7338



The Refuge, Inc.